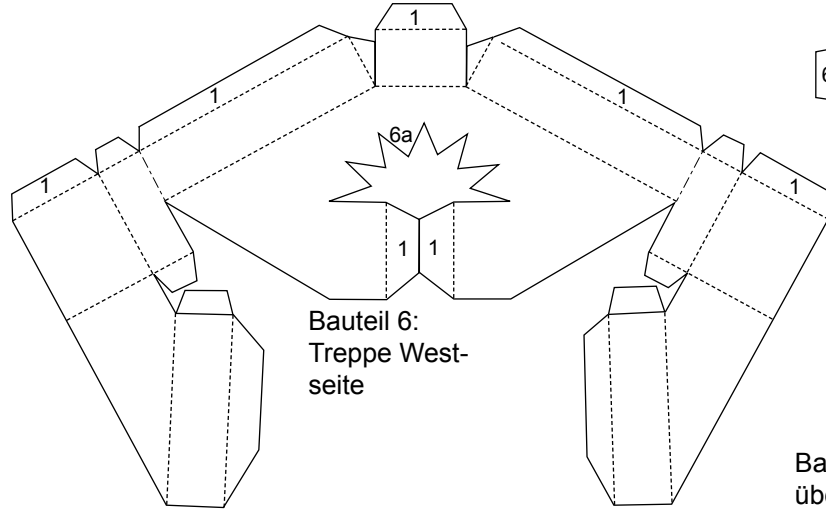
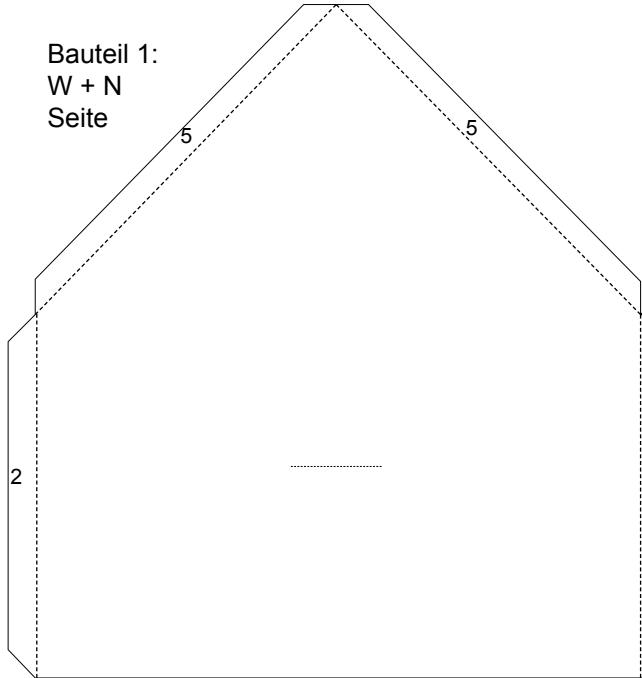


Bauteil 4:  
Dach Turm

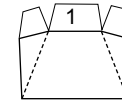
Bauteil 1:  
W + N  
Seite



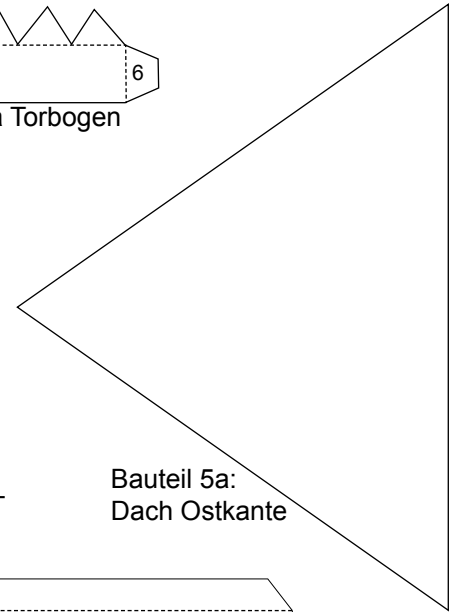
Bauteil 6:  
Treppe West-  
seite



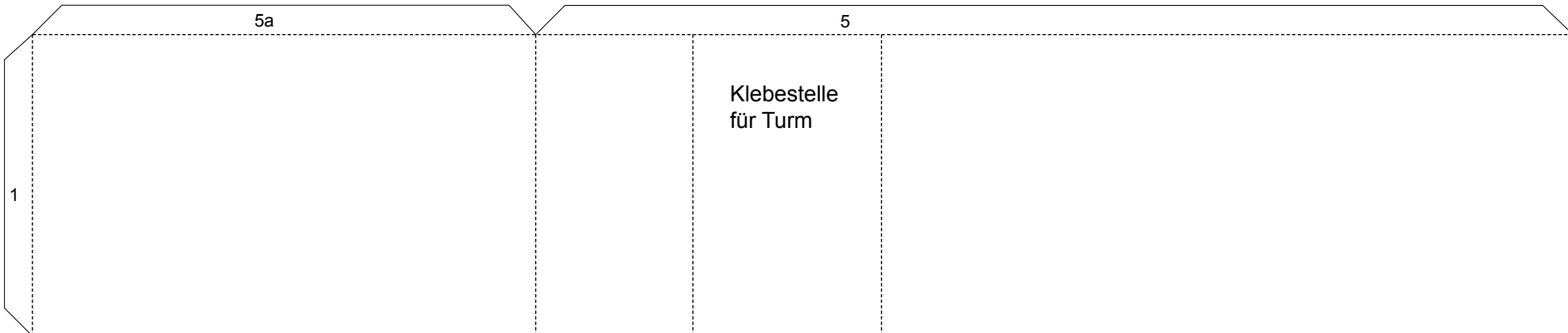
Bauteil 6a Torbogen



Bauteil 7: Dach  
über Türe West-  
kante



Bauteil 5a:  
Dach Ostkante



Bauteil 2:  
O + S  
Seite

